

# DX3-6000 High Efficiency Solar Street Light

(2x the luminance of the DX3-3000)

An alternative and clean outdoor lighting solution for anywhere, anytime

Every year, millions of street lights are installed worldwide. The demand for street lighting is creating a significant impact on the available electrical generation. Our solution removes the lighting from the grid using solar power or reduces the power demand using our highly efficient LED lights. Our solar lighting concept is a viable, proven alternative to traditional lighting methods.

DX3 Enterprises Ltd. manufactures high efficiency, high output LED arrays and Intelligent Hybrid Driver Boards (IHDB). We offer the first fully-integrated, intelligent, hybrid multi-source powered LED Street Light for anytime, anywhere installation, without the need for electricity. The solar panel array is aimed towards the sun at the optimal angle for maximum power. The DX3-6000 solar array is mounted directly onto the light pole.

Our products are manufactured with the very latest technologies including light weight, electrically robust, Lithium Polymer batteries. Our main components are custom designed & assembled in Canada including domestic LED & driver board manufacturing.

## KEY FEATURES

- INCREASED LIGHT OUTPUT FOR LARGER AREA ILLUMINATION •
- FLEXIBLE MODEL SELECTION FOR ADAPTING VARIOUS SOLAR RADIATION LEVELS •
- ADVANCED POWER MANAGEMENT FEATURES FOR SUMMER / WINTER OPTIMIZATION •
- INSTALL AND FORGET - OVER 3 YEARS OF RELIABLE MAINTENANCE FREE OPERATION •
- POWDER COATED ALUMINUM & STEEL CONSTRUCTION FOR DURABILITY •

## BENEFITS

- LOW CAPITAL COST - NO POWER CABLES, TRENCHES, POWER SYSTEM REQUIRED •
- ZERO OPERATING AND MINIMAL ROUTINE MAINTENANCE COST •
- IMPROVED SAFETY FACTOR – NO GRID CONNECTION •
- COMPACT SINGLE PIECE DESIGN •
- FAST & SIMPLE INSTALLATION – REDUCED LABOUR & INSTALLATION COST •

## PACKAGING

To properly package the integrated DX3-6000 solar street light system we custom manufacture our street light head to contain all the major components, this includes the battery and driver boards that are located inside the light housing. The DX3-6000 comes with a special designed pole for easy mounting of the solar array.

---

For more information on this or other products & services,

Please visit our Website:

[www.DX3LTD.com](http://www.DX3LTD.com)

**HEAD OFFICE: CANADA – WEST**  
Unit #109, 117 Pembina Road  
Sherwood Park, AB, Canada T8H 0J4

**Phone:** 780-467-0303  
**Toll Free:** 866-796-0303  
**Fax:** 866-821-3732  
**E-mail:** [sales@dx3ltd.com](mailto:sales@dx3ltd.com)

**DX3**  
ENTERPRISES LTD.

\*

## DX3-6000 Specifications

\*Information subject to change without notice.

### DX3 ENTERPRISES LTD. LED ARRAY Specifications

DX3 ENTERPRISES LTD. Model: DX3-6000  
 LED Selection Option: 32 LED array, 4000 – 6000 Lumens;  
 DX3-LCGC2-32 (Cree) OR DX3-LRPW2-32 (Rebel)  
 Watts: Nominal 54W, Factory adjustable 40W to 60W  
 Warranty: 2 year limited warranty on material and workmanship  
 LED Life span: 50,000+ Hours

### DX3 ENTERPRISES LTD. DRIVER BOARD Specifications

Driver Type: DX3 ENTERPRISES LTD. designed charge control and LED driver board, micro-procDX3or configurable, PWM dimming, high efficiency integrated system.  
 Inputs: Nominal 17.5VDC from Solar Panel & photo cell signal  
 input  
 Power Source: BATTERY 12.8VDC  
 Warranty: 2 year limited warranty on material and workmanship

### SOLAR PANEL Power Selection

Solar Panel Power Options: 170W (85W x2), 260W (130W x2)\*  
 Solar Panel Driver: DX3 ENTERPRISES LTD. ESD Integrated Maximum Power Point Tracking (MPPT) Solar Power Optimization. (DUAL driver board setting)  
 Solar Panel Mounting: Includes tubular attachment sleeve for connection to top of lamp post and mounting frame for secure attachment of solar panels. Orientation is adjustable towards sun.  
 Warranty: 1 year limited warranty on material and workmanship

\*Note: Please Check DX3-6000 Solar Panel Selection Map or ask DX3 Enterprises Ltd. experts for minimum Solar Panel Power Requirement for your geographic area.

### BATTERY SPECIFICATION

Battery Charge Driver: DX3 ENTERPRISES LTD. ESD Integrated Optimized Battery Charging Control (OBCC), with intelligent power source selection  
 Type: (1) AGM, Deep Cycle, Fully Sealed, Affordable, OR:  
 (2) Lithium Polymer (LP), Light Weight, Fully Sealed  
 Operating Temp: 0C to 40C (AGM), -40C to +80C (LP)  
 Capacity: 100 Ah (AGM), 90 Ah (LP)  
 Autonomous: Time Greater than 3 operating days (1 Day = 10  
 Nighttime Hours)  
 Weight: 29.03kg (64lbs) (AGM), 12.7kg (28lbs) (LP)  
 Lifespan: 1 – 3 years (AGM), 3 – 5 years (LP)  
 Warranty: 1 year limited warranty on material and workmanship



For more information on this or other products & services,

Please visit our Website:

[www.DX3LTD.com](http://www.DX3LTD.com)

**HEAD OFFICE: CANADA – WEST**  
 Unit #109, 117 Pembina Road  
 Sherwood Park, AB, Canada T8H 0J4

**Phone:** 780-467-0303  
**Toll Free:** 866-796-0303  
**Fax:** 866-821-3732  
**E-mail:** [sales@dx3ltd.com](mailto:sales@dx3ltd.com)



## POLE SPECIFICATION

Design:

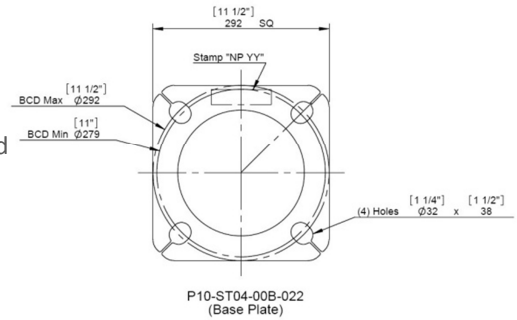
Pole supporting one fixture (3.6 sqft EPA & 82 Lbs) and one solar panel (59.5"x54" & 150 Lbs) is designed for 160k ph wind loading (including AASHTO gust factor of 1.3) in accordance with AASHTO Standard Specifications For Highway Signs, Luminaries, and Traffic Signals.

Height:

25'-0" light height, 26'-6" total pole height

Base Bolt Pattern:

11 to 11-1/2"



## CONSTRUCTION - DX3-6000 Street Light

Housing Aluminum Shell over Skeletal Structure, external solar panel array mounted on top of street pole with 360 degree swivel and vertical tilt. Swivel mount is directly connected to light head.

For more information on this or other products & services,

Please visit our Website:

[www.DX3LTD.com](http://www.DX3LTD.com)

**HEAD OFFICE: CANADA – WEST**

Unit #109, 117 Pembina Road  
Sherwood Park, AB, Canada T8H 0J4

**Phone:** 780-467-0303

**Toll Free:** 866-796-0303

**Fax:** 866-821-3732

**E-mail:** [sales@dx3ltd.com](mailto:sales@dx3ltd.com)

**DX3**  
ENTERPRISES LTD.